

# RT105 TRACTOR

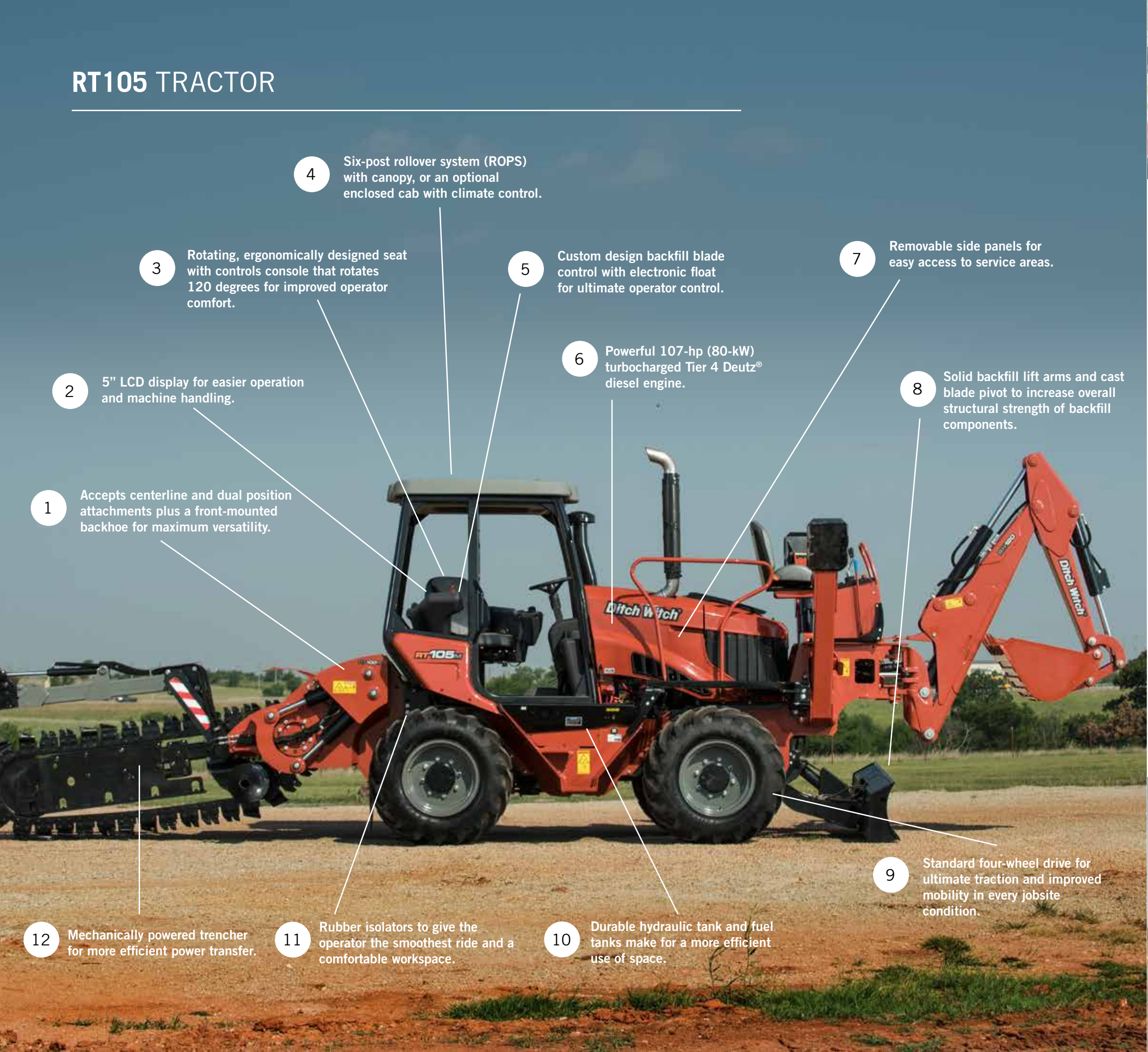
 **Ditch Witch®**

**RIDE-ON**





# RT105 TRACTOR



1 Accepts centerline and dual position attachments plus a front-mounted backhoe for maximum versatility.

2 5" LCD display for easier operation and machine handling.

3 Rotating, ergonomically designed seat with controls console that rotates 120 degrees for improved operator comfort.

4 Six-post rollover system (ROPS) with canopy, or an optional enclosed cab with climate control.

5 Custom design backfill blade control with electronic float for ultimate operator control.

6 Powerful 107-hp (80-kW) turbocharged Tier 4 Deutz® diesel engine.

7 Removable side panels for easy access to service areas.

8 Solid backfill lift arms and cast blade pivot to increase overall structural strength of backfill components.

9 Standard four-wheel drive for ultimate traction and improved mobility in every jobsite condition.

10 Durable hydraulic tank and fuel tanks make for a more efficient use of space.

11 Rubber isolators to give the operator the smoothest ride and a comfortable workspace.

12 Mechanically powered trencher for more efficient power transfer.



The RT105 lives up to its name—it is the ultimate machine if you're looking for power, convenience and durability, not to mention operator comfort. The RT105 features a variety of incredible benefits from a four-wheel drive and a power shift transmission, to a roomy cab with an ergonomically designed seat that will make every job run smoother and faster. The RT105 is the toughest tool you can find to help you get through your job with ease.

WE'RE IN THIS TOGETHER.





RT105 TRACTOR SPECIFICATIONS

	U.S.	METRIC
DIMENSIONS		
Angle of approach (A2)	25°	25°
Height (H1)	115 in	2,920 mm
Height (H2)	105 in	2,667 mm
Nose to rear mount length (L1)	125 in	3,175 mm
Length, transport (L2)	154 in	3,910 mm
Wheelbase (L4)	79 in	2,005 mm
Width (W2)	82 in	2,085 mm
Width (W4)	64 in	1,625 mm
POWER PLANT		
Engine	Deutz® TCD3.6L4	
Fuel	Diesel	
Cooling medium	Liquid	
Injection	Direct	
Aspiration	Turbocharged, charge air cooled	
Number of cylinders	4	
Displacement	221 in³	3.6 L
Bore	3.86 in	98 mm
Stroke	4.72 in	120 mm
Manufacturer's gross power rating (SAE J1995)	107 hp	80 kW
Rated speed	2,300 rpm	2,300 rpm
Engine tilt angles, max		
Longitudinal	30°	
Lateral	30°	
Emissions compliance (highly regulated countries)	EPA Tier 4 Final	EU Stage IV
Emissions compliance (less regulated countries)	EPA Tier 4i	EU Stage IIIB

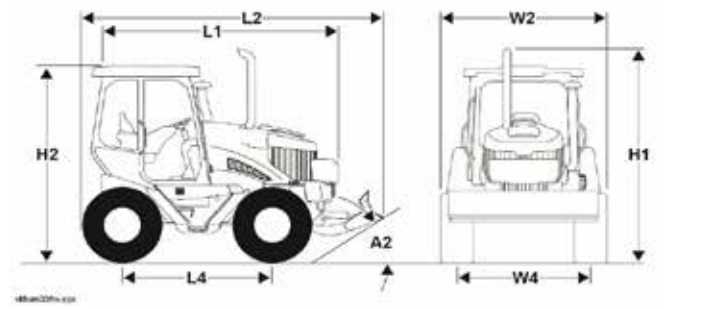
	U.S.	METRIC
POWER TRAIN		
Ground drive transmission	(Driving) powershift, (trenching) powershift w/(crowd) hydrostat	
Differentials	Planetary front and rear w/rear steering	
Service brake	Disc type, foot operated	
Parking brake	Disc type, SAHR	
OPERATION		
Forward speed		
Crowd	0.6 mph	0.96 km/h
Low	6.2 mph	9.9 km/h
High	9.2 mph	14.9 km/h
Reverse speed		
Crowd	0.6 mph	0.96 km/h
Low	6.2 mph	9.9 km/h
High	9.2 mph	14.9 km/h
Vehicle clearance circle (SAE) wall to wall w/backfill blade		
Front steer only	35 ft	10.7 m
Front and rear steer	21 ft	6.4 m
Ground clearance	14 in	356 mm
Basic unit weight	9,700 lb	4400 kg
Allowable tractor weight, max	22,000 lb	9979 kg
Front counterweight	1,300 lb	590 kg
Side counterweight, each	250 lb	114 kg

RT105 TRACTOR SPECIFICATIONS

	U.S.	METRIC
HYDRAULIC SYSTEM @ 2,300 RPM		
Crowd circuit drive/steer pump capacity	11.5 gpm	43 l/min
Ground drive pump relief pressure	3,100 psi	213 bar
Auxiliary pump capacity	5.1 gpm	19.3 l/min
Auxiliary pump relief pressure	3,000 psi	206 bar
FLUID CAPACITIES		
Fuel tank	38 gal	144 L
Engine oil	8.5 qt	8 L
Hydraulic reservoir	25 gal	95 L
Hydraulic system	30 gal	114 L
Cooling system	4.25 gal	16.1 L
DEF tank	2.6 gal	10 L
NOISE LEVEL		
Operator	91 dBA sound pressure per ISO 6394	
Exterior	107 dBA sound power per ISO 6393	
BACKFILL BLADE		
Blade width	80 in	2030 mm
Blade height	17 in	430 mm
Lift height above ground	26 in	660 mm
Blade drop below ground	10 in	254 mm
Swing angle, max (left/right)	30°	30°
Tilt angle, up/down	12°	12°

	U.S.	METRIC
BATTERY (2 USED)		
Group	65, SAE res. cap 165 min	
SAE cold crank @ 0°F(-18°C)	875 amp	
Auxiliary power outlet	12 volt, 10 amp	
VIBRATION LEVEL		
Average vibration transmitted to the operator's hand during normal operation is 5.98 m/sec².		
Average vibration transmitted to the operator's whole body during normal operation does not exceed 0.64 m/sec².		

Unless otherwise specified, all figures are for standard equipment only. Specifications are called out according to SAE recommended procedures. Due to selected options, delivered equipment may not necessarily match that described. Specifications are general and subject to change without notice. If exact measurements are required, equipment should be weighed and measured.





# RT105 TRACTOR ATTACHMENTS



BH120 BACKHOE

DIMENSIONS	U.S.	METRIC
Transport height	118 in	2997 mm
Ground clearance	29 in	736 mm
Digging depth, max	112 in	2844 mm
Reach from swing pivot	158 in	4013 mm
Bucket width	12-24 in	300-610 mm
Backhoe weight without bucket	3,300 lb	1497 kg
Swing arc	180°	180°



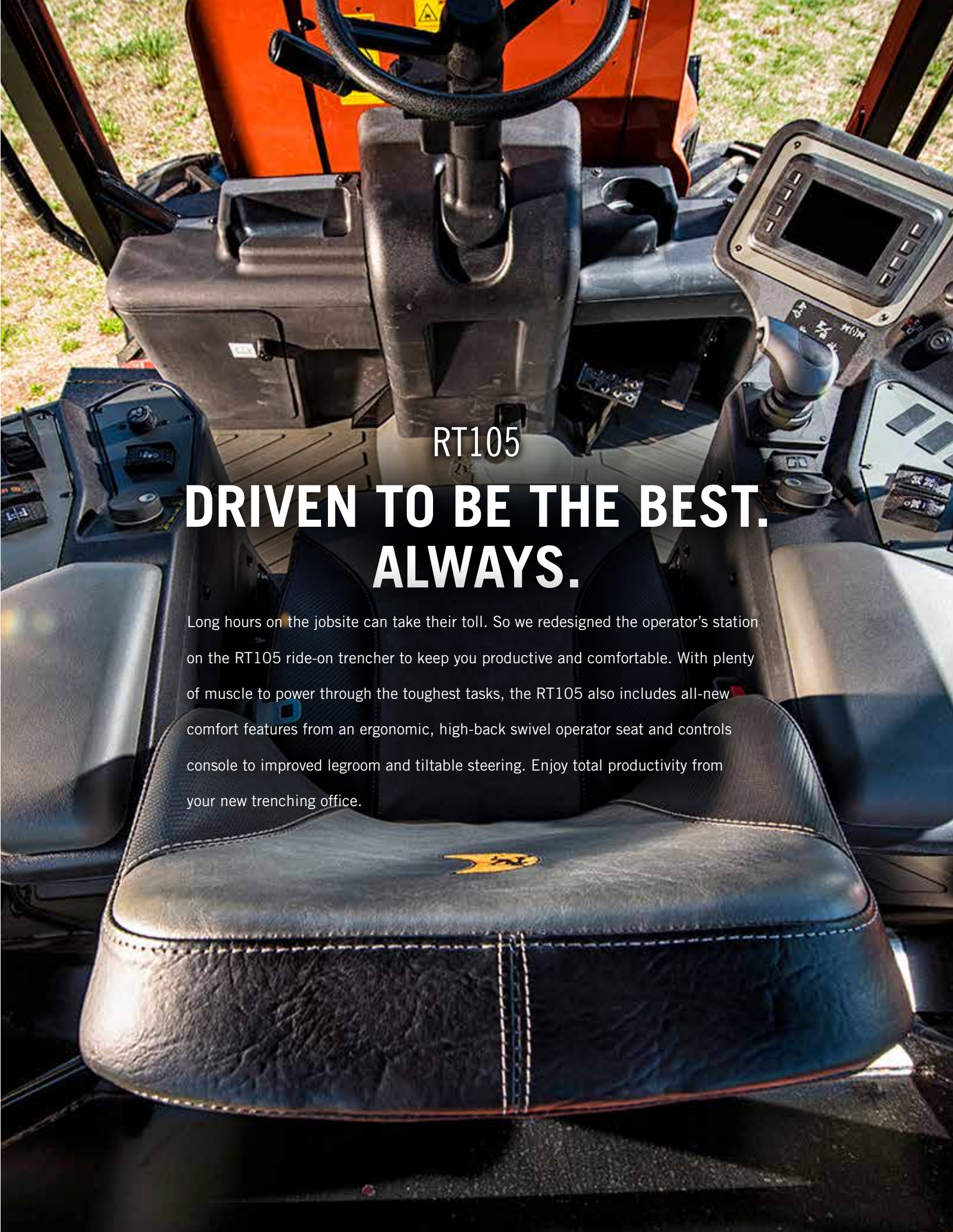
CT100M TRENCHING ATTACHMENT

DIMENSIONS	U.S.	METRIC
Angle of departure	23.7°	
Trench depth, max	97 in	2463 mm
Trench width, max	24 in	610 mm
Transport height	124 in	3251 mm
Transport length	115 in	2921 mm
Attachment weight	1,750 lb	794 kg



DT100M TRENCHING ATTACHMENT

DIMENSIONS	U.S.	METRIC
Angle of departure	28°	
Trench depth, max	97 in	2464 mm
Trench width, center position max	24 in	610 mm
Trench width, offset position max	12 in	305 mm
Transport height	124 in	3251 mm
Transport length	115 in	2921 mm
Attachment weight	1,750 lb	794 kg



RT105  
DRIVEN TO BE THE BEST.  
ALWAYS.

Long hours on the jobsite can take their toll. So we redesigned the operator's station on the RT105 ride-on trencher to keep you productive and comfortable. With plenty of muscle to power through the toughest tasks, the RT105 also includes all-new comfort features from an ergonomic, high-back swivel operator seat and controls console to improved legroom and tiltable steering. Enjoy total productivity from your new trenching office.





**FIND THE SUPPORT YOU NEED AT YOUR DITCH WITCH® DEALER, INCLUDING:**



### **DIGGING SYSTEMS**

Replacing worn digging system components is essential to maintaining maximum productivity from your trencher. See your dealer for genuine Ditch Witch chain, specially manufactured headshaft sprockets and digging teeth, which are designed to work together as a system to provide unparalleled trenching performance.



### **PARTS**

Tires, rubber tracks, o-ring kits, decals, paint, filters, hydraulic cylinder kits, belts, and many other accessories and replacement parts are available at your local Ditch Witch dealership, where you'll also find expert advice that comes from years of experience in the underground construction industry.



### **SERVICE**

Your Ditch Witch dealership offers professional service technicians who are extensively trained in every aspect of Ditch Witch equipment maintenance and repair. Ask a service representative about our Orange Armor® Planned Maintenance program, a schedule of maintenance at factory-suggested intervals that keeps your equipment in peak operating condition.

