



NEW HOLLAND T4

T4.75 | T4.85 | T4.95 | T4.105 | T4.115



ALWAYS READY WHEN YOU ARE

NEW T4: POWER. COMPACT DIMENSIONS. PERFECT FOR YOUR FARM.

The all new T4 range has been designed to further enhance your mixed, livestock or small arable operation. The natural heir to the acclaimed T4000 range, the five model line-up also replaces the entry-level T5000 models. With a whole host of deluxe options and powerful engines which develop between 74-114hp(CV), you've found your all-round farming partner.



MAXIMUM VERSATILITY

The T4 has been engineered by design to be as flexible as you, and can turn its hand to all farming tasks. The flexible fully integrated front linkage and PTO ensure ultimate versatility whilst the powerful loader guarantees true multipurpose operation. The T4's outstanding agility can be further enhanced with the addition of the optional SuperSteer™ front axle, which delivers true turn on a sixpence manoeuvrability in the yard or in the field, and the T4 can still sneak into even the lowest livestock sheds. Throw in the optional creeper function and you've got every type of farming all sewn up.



ABSOLUTE DRIVING PLEASURE

New Holland knows that you'll be spending long hours behind the wheel of your T4, so it has been designed right around you. The deluxe VisionView™ Cab and Command Arc take tractor comfort and ergonomics to a whole new level with unsurpassed visibility and a range of electronically assisted controls. Impressive rear lift capacity means the heaviest implements are lifted with ease.





POWER AND PRODUCTIVITY

Powerful Common Rail engines that fully comply with the stringent Tier 4A emissions regulations mean you'll benefit from a significant increase in power output, with up to 114hp(CV) available for demanding tasks. Sky high maximum torque of 457Nm, 35% torque backup and a constant maximum power band between 1900-2300rpm, the most common working range, add up to improved productivity. When we throw in a power-to-weight ratio of a mere 31.6kg/hp(CV), you'll take your farm to a whole new level.



EASE OF OWNERSHIP

As farmers, you want to spend more time getting on with the task in hand and less time looking after your tractor. You asked. The T4 range delivers. With super-long service intervals of 600 hours, the longest in the segment, you'll spend more time working and less time maintaining. Routine daily checks are facilitated by the single piece, self-supporting bonnet and are made even easier thanks to easy to access, ground level service points. The T4. Making your life even easier.



EXACTLY WHAT IT SAYS ON THE BONNET

The T4 range's performance is immediately obviously to all users. How? Quite simply it's on the bonnet. The first two digits 'T4' refer to the tractor's category and the following two or three, for example '115', refer to the maximum engine power, rounded to the nearest five. What does that mean to you? You can buy your T4 safe in the knowledge that its performance will perfectly match your requirements. Trust New Holland for ultimate productivity peace of mind.

QUIET, COMFORTABLE AND OFFERING A GREAT VIEW

The T4 offers you tailored comfort. The deluxe VisionView™ cab has been designed around you for the ultimate operator experience. Over 20% larger than the T4000 cab, you'll have the space to fully enjoy farming. Panoramic visibility is guaranteed. Always. Curved and openable side windows. The extended rear windscreen guarantees a crystal clear view of the rear hitch. Want more? You'll be comfortable too, courtesy of the adjustable steering column and dash. Your T4. As individual as you.



A PERFECT VIEW OF YOUR LOADER

The high visibility roof hatch has been engineered by design to offer a perfect view of the loader at full extension without having to crane your neck for enhanced comfort. The lowest obscured band in the segment further increases productivity. On the hottest days, open the hatch to improve ventilation and pull across the integrated sunshade to protect yourself from the harshest rays.





WELCOME ABOARD

The wide opening doors guarantee easy entry and exit, perfect when you're in and out of the cab like a yo-yo when feeding cattle. Left or right. The choice is yours. Both doors fully open for even easier access in narrow sheds. Throw in a super flat floor and fatigue reducing suspended pedals and you've got day-long comfort in the bag. You can keep an eagle eye on even the widest attachments and trailers thanks to telescopic wing mirrors.

OUTSTANDING SEAT COMFORT

The optional deluxe air-suspension seat can be precision adjusted to suit you. For operators who extensively use rear mounted equipment, 15° of swivel reduce neck fatigue during long days. You can also invite your friends to share the fun with the full sized instructor seat with seat belt.

CONTROL THE CLIMATE OF YOUR CAB

The air conditioning system features dual fan technology to guarantee high performance in even the hottest summers and in the very bitterest of winters. Individually position up to 10 vents to control the airflow for ultimate all-body comfort or super-fast defrosting of the windscreen. The B pillar mounted controls fall perfectly to hand and can be intuitively adjusted whilst on the move. When it's cold outside you'll want to hang your coat up when you climb into the cab. Now you'll be able to use the convenient coat hook which keeps it neatly in place.

TURNING NIGHT INTO DAY

A complete range of working lights are fitted to all models as standard. They can be angled to suit the application, offering a broad spread of light in the darkest corners of any yard or shed. Turn night into day to make light work of late night cultivation. Lights are easily controlled via a dedicated switch on the B-pillar.



DESIGNED AROUND YOU. DESIGNED BY YOU.



The cab has been designed around you, the farmer. How? Well, you were at the heart of the design phase. Developed and tested using state of the art virtual reality techniques, and refined with our virtual farmer Jack, all principle controls are grouped on the Command Arc. This ergonomic cluster means you can select the most frequently used controls without doing the twist for superior productivity and reduced fatigue. Throw in a 20% larger cab volume and you'll never want to leave.



- Fine tune your speed with the easy to use hand throttle.

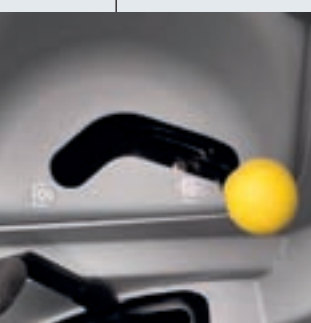
- Up to three remote valves are smoothly and ergonomically engaged with the dedicated levers.

- The ergonomically positioned PTO speed selector falls naturally to hand.

- All switches are back lit for even easier operation when working late into the night. This function is automatically activated when working lights are engaged.

- Select four wheel drive and the diff. lock simply and easily with a fingertip switch on Dual Command™ models.

The PTO is conveniently started and stopped by a push-pull switch. On Synchro Shuttle™ cab models, the PTO is positively engaged courtesy of an ergonomically positioned servo-assisted lever for effortless actuation.





COMFORTABLE LOADER CONTROL

Control up to two mid-mount remotes with the integrated joystick which can be operated from the driver's seat for heightened comfort and productivity. The joystick has been ideally positioned on the Command Arc for intuitive operation.



MONITORS ARE WELCOME

A baler bar, with fully adjustable position-settings, can be specified for bale monitors and control boxes, perfect for haying businesses. Controls are placed in the natural line of sight for improved safety.



AT A GLANCE PERFORMANCE MONITORING

The clear and visible instrument cluster moves in conjunction with the fully tiltable steering column for a permanently unobstructed view of key operating parameters. Consult the all-new, easy to read dot matrix performance monitor for at a glance operating information. Direction, acres worked and servicing information are clearly marked in the three-section display.



The ergonomically positioned creeper engagement lever falls naturally to hand.



The ergonomic EDC mouse puts draft and depth control in your hand.



The advanced EDC controls are ideally placed to fine-tune drop rate, the height limiter, sensitivity and slip for uniform cultivation and maximum traction.



MUSIC TO FARM TO

A simple to operate radio makes selecting your favourite station on the go even easier thanks to large-sized, reinforced buttons. For music lovers, an MP3 auxiliary plug, together with its own personal pocket is also available.

RESPONSIVE POWER. PRODUCTIVE EFFICIENCY.



COMMON RAIL. COMMON SENSE.

The entire T4 range boasts 3.4 litre Common Rail F5C engines developed by FPT Industrial that fully comply with the stringent Tier 4A emissions regulations. New Holland introduced Common Rail to agriculture in 2003, and the optimised engines on the T4 range benefit from the latest generation in this fuel efficient technology. These powerful, super-quiet engines have been updated, and now develop between 75-114hp(CV) and up to 457Nm of torque for guaranteed productivity. Throw in a power-to-weight ratio of just 31.6kg/hp(CV) and the T4 is your perfect farming partner.

EFFICIENT RESPONSE

Common Rail uses precision fuelling technology for greater responsiveness as well as fuel efficiency. Put simply, you maintain performance whilst controlling your fuel bills. Furthermore, maximum power is achieved at a mere 1900rpm and is available right up to 2300rpm, the most frequently used working range, for improved productivity in all applications including PTO and high speed road transport. A flatter maximum torque curve throughout the optimum working range further boosts your operational flexibility.



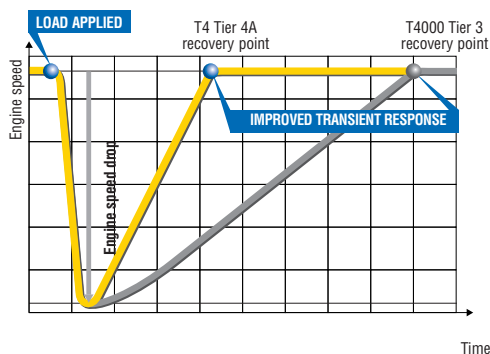
CLEAN ENERGY LEADER

The entire T4 range will use Cooled Exhaust Gas Recirculation (CEGR) for Tier 4A compliance. This is in alignment with New Holland's Tier 4A strategy, which foresees the use of ECOBlue™ SCR technology on high powered products and CEGR for lower powered products with reduced cooling requirements and for which overall product dimensions are of vital importance.



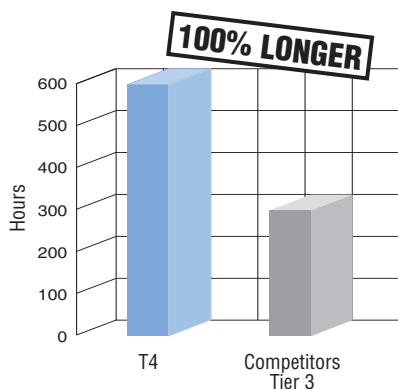
A LIGHT TOUCH

The T4 benefits from an outstanding power-to-weight ratio of a mere 31.6kg/hp(CV). So what? Well, how about reduced fuel consumption as you're not lugging around dead weight? If that wasn't enough, you'll reduce soil compaction to for enhanced yields, year in, year out.



SUSTAINED PRODUCTIVITY IN ALL CONDITIONS

Here at New Holland we're passionate about transient response and it's your productivity guarantee. Put simply, when you ask for more, your reactive engine and its enormous 35% torque back-up gives it to you. In practice, when you're working in demanding conditions, for example when baling heavy silage in uneven swaths, you'll maintain forward and PTO speed even when the largest lumps are fed into the baler. Transient response. You've got it covered.



MORE TIME IN THE FIELD, LESS TIME IN THE YARD

Advanced engineering design means lower maintenance demands. All T4 models benefit from New Holland's industry leading 600-hour service intervals, and they all run on easily available standard oils. Choose New Holland to save money, downtime and to protect the environment.



POWERED BY FPT INDUSTRIAL

New Holland are not going it alone when it comes to Tier 4A technology, they can draw on the experience of their sister company: FPT Industrial.

Pioneers: Fiat invented Common Rail technology in the 1980s and brought it to the masses in 1997 on the Alfa Romeo 156. They were the very first to introduce it on agricultural machines on the TS-A tractor. Pioneering. Always.

Cleaner: Fiat SpA for the last five consecutive years has the lowest average CO₂ emissions of any automotive manufacturer in Europe. Cleaner. Everywhere.

Proven: FPT Industrial have already produced over 125.000 F5C engines during the last five years. Reliability. Confirmed.

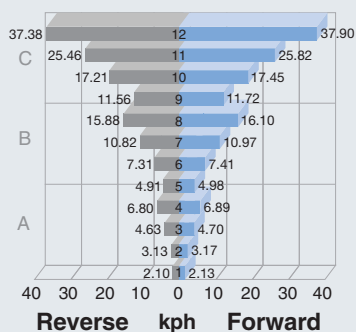


FLEXIBLE TRANSMISSION OFFERING TO SUITE YOUR NEEDS



Every farmer has different requirements, and intelligent innovation also means offering tried and tested solutions to improve your efficiency. Here at New Holland, we listened to you, and now you have an even wider choice of transmissions. The new Dual Command™ with creeper option offers the ultimate in operational flexibility. But no matter if you like to live life in the fast lane, or if you prefer to take things slow, you'll always be able to find the perfect solution for your operation.

12x12 Transmission



PRODUCTIVE SIMPLICITY

The entry-level 12x12 Synchro Shuttle™ transmission offers traditional robust operation for get on and go farming. The mechanical shuttle ensures positive direction changes. Upgrade to the 12x12 Hydraulic Powershuttle transmission for ergonomic direction changes: the hydraulic shuttle guarantees smooth direction changes without the need to use the clutch pedal.

GOING SLOW HAS NEVER BEEN MORE PRODUCTIVE

The 20x20 Synchro Shuttle with Creeper, the 20x20 hydraulic Powershuttle with Creeper and the 40x40 Dual Command™ transmission with Creeper are ideal for specialist businesses such as vegetable farmers. Tackle hand planting or harvesting with relish courtesy of creep speeds as low as 0.25kph, a top transport speed of 40kph is maintained to whisk your harvest back to the farm for safe keeping.

DUAL COMMAND. OUTSTANDING EFFICIENCY. TAILORED SHUTTLING PERFORMANCE.

The 24x24 Dual Command™ transmission features a Hi-Lo Splitter full load powershift. Activated on the move, it offers a 15% reduction in forward speed to increase available torque by up to 18%. The exclusive PowerClutch button, ergonomically located on the back of the gear lever, shifts between eight speeds in the three main ranges without the need to depress the clutch pedal. You can easily shuttle whilst holding the steering wheel using the column mounted lever for absolute safety. Want more? You can select a soft, standard and aggressive shuttling mode via a dedicated button on the B pillar ... all whilst on the move!

SUPER SAFE MECHANICAL PARK LOCK

If you work in very hilly terrain, then the mechanical park lock will give you additional peace of mind. This system is mechanically engaged via a dedicated position on the range lever, and it mechanically locks the gears to prevent even the slightest forward or reverse creep when parked on any slope. This is especially beneficial when towing fully laden trailers.

SUPERSTEER: TIGHT TURNS BOOST PRODUCTIVITY

The SuperSteer™ front axle, delivers a maximum turning angle of 76° to give you row crop agility in all operations. Reduce the time turning on the headland or in the yard to increase your productivity.

TWO OR FOUR, THE CHOICE IS YOURS

The entire T4 range can be specified with either two or four wheel drive axles. Farmers working in demanding conditions, or those requiring greater braking performance will select a four wheel drive model. Why? During high speed transport, four wheel drive automatically engages to further improve braking performance. On Dual Command™ models, engagement is via a dedicated fingertip switch situated on the Command Arc, and all other models benefit from standard mechanical engagement via a lever. Where manoeuvrability is king, the two wheel drive option offers an interesting alternative.

ENHANCE FARMING VERSATILITY WITH A FRONT LINKAGE AND LOADER

New Holland knows that full integration is far better than something that has been tacked on as an after thought. That is why the T4 was designed with front loaders and front linkage in mind. The T4 is fully compatible with New Holland's 700TL range of front loaders: the perfect productivity combination. Moreover, you no longer have to choose between front loader or front linkage, with the new T4 you can have both.



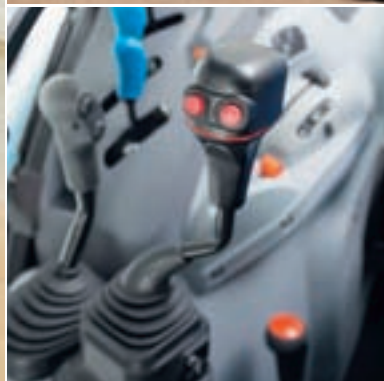
MODELS	720TL	730TL	740TL
Max. lift height (m)	3.4	3.7	3.7
Max. lift capacity (kg)	2000	2060	2539
T4.75	○	○	○
T4.85	○	○	○
T4.95	●	○	○
T4.105	○	●	○
T4.115	○	○	●

● Recommended ○ Optional



LOW MOUNTING POINTS FOR IMPROVED VISIBILITY

The loader's low mounting brackets guarantee exceptional forward and downward visibility, both when the loader is mounted, and when it has been removed. Moreover, the low mounting points have lowered the tractor's overall centre of gravity, which adds up to greater stability when transporting full loads in the fully extended position.



FOPS: YOUR SAFETY PARTNER

Both cabbed and optional canopy ROPS versions offer FOPS (Falling Object Protection System) technology to guard against injury from falling objects.

EVEN FASTER LOADER COUPLING

Attachments can be quickly and easily connected courtesy of quick coupling technology. Just one coupling safely secures the attachments for reduced time in the yard and more time on the job. Do you always need your loader? Reduce your operating costs by removing it when not required, after all, it's got its own built-in stands for safe storage and a single quick-attach connector further speeds up the process.

ROBUST DESIGN. ENHANCED PRODUCTIVITY.

The 700TL range of New Holland loaders are the perfect productivity partner for the T4 range of tractors. Featuring robust design, they have been designed for work, with a maximum lift capacity of 2060kg and a maximum lift height of 3.7m. The impressive dump angle of 59° assists in easy emptying of even the stickiest material.

KEEP EVERYTHING UNDER CONTROL

The loader joystick has been precision placed on the Command Arc to offer the ultimate in ergonomic operation. Falling naturally to hand, you can take your loader to full extension without the need to stretch and strain. Enhancing comfort. Improving productivity.

MULTIFUNCTIONAL FRONT LINKAGE AND PTO FOR ENHANCED FLEXIBILITY

The factory fitted front linkage can lift up to 1670kg and the 1000-speed PTO further enriches this range's outstanding versatility. Hay and forage customers that work with front mounted mowers will wonder how they've ever managed without it! The optional multi-function front support offers four interchangeable options for outstanding versatility: simply swap between a front ballast carrier, the front linkage, a front PTO (perfect for municipalities) and the range-topping front linkage and PTO combination; perfect should a change in business focus occur.



HYDRAULIC FLEXIBILITY

DESIGNED FOR MIXED FARMERS

A one size fits all hydraulic offering was never an option for the T4 range. The standard 48 litre/minute variant features a dedicated 28 litre/minute services pump and is perfect for standard farming applications. The MegaFlow™ option, standard on T4.115 models, delivers up to 64 litre/minutes of hydraulic flow to the main pump, and means you've got the power on tap to breeze through even the most demanding hydraulic applications such as bale wrapping. The 36 litre/minute dedicated, separate services pump ensures steering remains light and responsive even during intensive loader and rear linkage work.



SELECT THE HYDRAULIC PACKAGE THAT'S RIGHT FOR YOU

The T4 range features two rear hydraulic remote valves as standard, and three as an option. An optional diverter can also be specified and brings the number of hydraulic couplings to eight. Two mid-mount valves can also be specified, with an optional third function button, perfect for hedge cutting, loader and specialist operations. These valves are controlled via an ergonomic, fully integrated joystick in the cab.



EASY TO USE MECHANICAL DRAFT CONTROL

Mechanical draft control offers proven reliability when returning an implement to work during a headland turn sequence. This simple, easy to operate system uses two dedicated levers. If you carry out extensive cultivation work, specify the optional, award-winning Lift-O-Matic™ Plus system. One lever simply returns your implement to a pre-set depth, first time, every time.

HIGH CAPACITY REAR LINKAGE

Measured at the ball ends, rear lift capacity has been increased by 20% on the new T4 range. Hitching has been made even easier on Dual Command™ models, as rear linkage and PTO controls have now been placed on the rear fenders for even more convenient hitching.



PTO: CHOICE AND SOFT START

A full range of PTO speeds can be selected using the ergonomic lever situated to the right of the operator. 540, 1000 and 540 ECO options are available, achieved at engine speeds as low as a mere 1535rpm for reduced fuel consumption and whisper quiet in-cab operation are all available. Soft start PTO is engaged via a dedicated switch on the Command Arc, and it helps protect both the tractor and the implement to prevent sudden shock loads.



ACCURATE ELECTRONIC DRAFT CONTROL

Available on Dual Command™ models, the ergonomic EDC mouse nestles perfectly under the right hand and features acclaimed New Holland design for one-handed operation. Control linkage height and depth for uniform fields, time after time. The fast linkage raise and lower button makes returning an implement to work during a headland turn even easier and faster, speeding up cultivation for improved productivity. You can also fine-tune the settings using the dedicated dials, situated to the right of the operator.

360°:T4

The new T4 has been designed for the ultimate in ease of daily maintenance. All service points are easy to access from ground level, and super-long 600 hour service intervals mean these tractors will spend more time in their natural environment, doing what you want them to.



Top-up the washer bottle through the rear window



Engine and hydraulic oil are checked without opening the bonnet for faster checking and simpler servicing.

Single piece, lockable bonnet opens wide for full servicing access.

Choose the optional large tool box to keep all your tools safe.

Replace or clean the cab air filter by simply removing from the easy access fender-mounted position.

The cooling package slides out for simple and efficient cleaning.

The cyclonic air filter is easy to check, clean or replace with no need for tools.

Refill the 115 litre fuel tank from ground level.



GUIDANCE: YOUR PRECISION FARMING SOLUTION

Choose from a wide range of products to make operations such as fertiliser spreading even easier and more accurate. From the simple and affordable EZ-Guide® 250, manual guidance lightbar to the advanced FM-1000 with the high performance EZ-Pilot™ assisted guidance solution, your individual needs can be catered for. From spreading and spraying to precision drilling, the T4 can do it all. And at the end of the day you can quickly transfer data to your PC thanks to a USB flash drive port.



DEALER INSTALLED ACCESSORIES

A comprehensive range of approved accessories to optimise machine performance in all conditions can be supplied and fitted by your dealer.



FINANCE TAILORED TO YOUR BUSINESS

CNH Industrial Capital, the financial services company of New Holland, is well established and respected within the agricultural sector. Advice and finance packages tailored to your specific needs are available. With CNH Industrial Capital, you have the peace of mind that comes from dealing with a financing company that specialises in agriculture.

TRAINED TO GIVE YOU THE BEST SUPPORT

Your dedicated New Holland dealer technicians receive regular training updates. These are carried out both through on-line courses as well as intensive classroom sessions. This advanced approach ensures your dealer will always have the skills needed to look after the latest and most advanced New Holland products.

SERVICE PLUS - LONG LASTING CONFIDENCE

Service Plus coverage from Covéa Fleet provides owners of New Holland agricultural machinery with additional cover on the expiry of the manufacturer's contractual warranty. Please ask your dealer for more details.

Terms and conditions apply.

NEW HOLLAND APPS

iBrochure

NH Weather

NH News

Farm Genius

PLM Calculator

PLM Academy



Experience New Holland
What's App!

Scan here to download the Apps



NEW HOLLAND STYLE

Want to make New Holland a part of your everyday life? Browse the comprehensive selection on www.newhollandstyle.com.

A whole range of items are available including hard wearing work clothing and a vast selection of scale models, together with so much more.

New Holland. As individual as you.



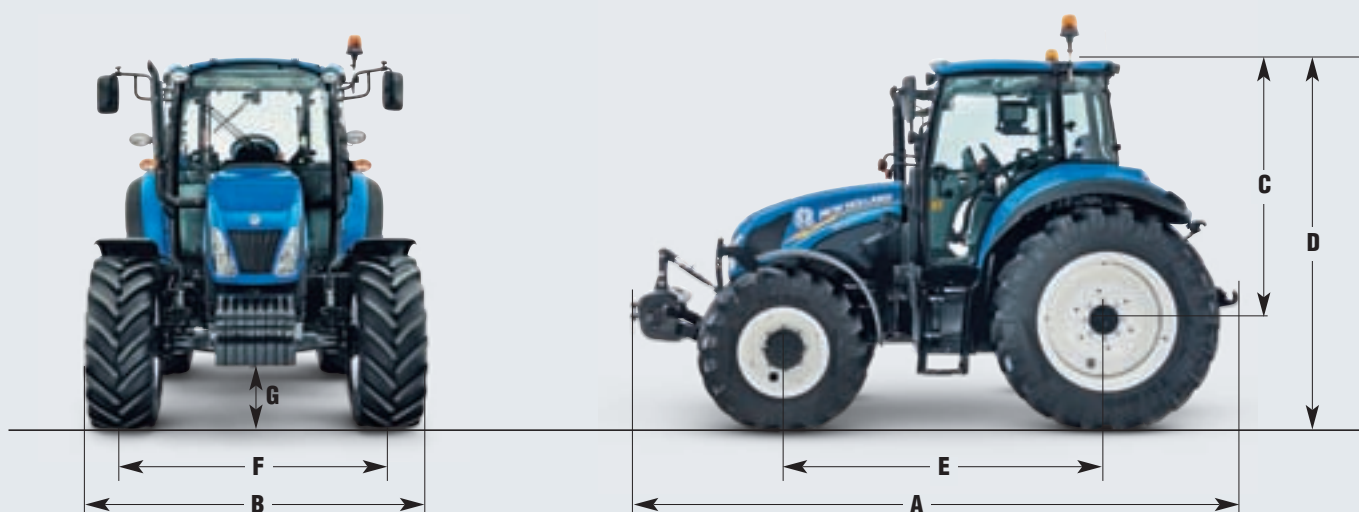
MODELS

	T4.75	T4.85	T4.95	T4.105	T4.115
Engine*	F5C	F5C	F5C	F5C	F5C
No. of Cylinders / Aspiration / Valves / Emission level Tier-Stage	4/T/2/4A-3B	4/T/2/4A-3B	4/T/2/4A-3B	4/T/2/4A-3B	4/T/2/4A-3B
Fuel System - High Pressure Common Rail	●	●	●	●	●
Capacity (cm³)	3400	3400	3400	3400	3400
Bore and stroke (mm)	99x110	99x110	99x110	99x110	99x110
Approved Biodiesel blend	B20**	B20**	B20**	B20**	B20**
Max. horsepower - ISO TR14396- ECE R120 [kW/hp(CV)]	55/75	63/86	73/99	79/107	84/114
Rated horsepower - ISO TR14396- ECE R120 [kW/hp(CV)]	55/75	63/86	73/99	79/107	85/114
Rated engine speed (rpm)	2300	2300	2300	2300	2300
Max. torque - ISO TR14396 (Nm)	309@1500	351@1500	407@1500	444@1500	457@1500
Torque rise (%)	35	34	34	35	32
Horizontal exhaust / Vertical exhaust	O / ●	O / ●	O / ●	O / ●	O / ●
Diesel tank capacity (Litres)	115	115	115	115	115
Service interval (hours)	600	600	600	600	600
Synchro Shuttle™ transmission (30kph / 40kph)	●	●	●	●	●
Number of gears (F x R)	12 x 12	12 x 12	12 x 12	12 x 12	12 x 12
Minimum speed (30kph / 40kph) (kph)	0.65 / 0.82	0.65 / 0.82	0.65 / 0.82	0.65 / 0.82	0.65 / 0.82
Gears in the 4-12kph working range	4	4	4	4	4
Synchro Shuttle™ transmission [Optional creeper (30kph / 40kph)]	O	O	O	O	O
Number of gears (F x R)	20 x 20	20 x 20	20 x 20	20 x 20	20 x 20
Minimum speed (30kph / 40kph) (kph)	0.09 / 0.11	0.09 / 0.11	0.09 / 0.11	0.09 / 0.11	0.09 / 0.11
Gears in the 4-12kph working range	4	4	4	4	4
Hydraulic Powershuttle transmission (30kph / 40kph)	O	O	O	O	O
Number of gears (F x R)	12 x 12	12 x 12	12 x 12	12 x 12	12 x 12
Minimum speed (30kph / 40kph) (kph)	1.81 / 2.15	1.81 / 2.15	1.81 / 2.15	1.81 / 2.15	1.81 / 2.15
Gears in the 4-12kph working range	6	6	6	6	6
Hydraulic Powershuttle transmission [Optional creeper (30kph / 40kph)]	O	O	O	O	O
Number of gears (F x R)	20 x 20	20 x 20	20 x 20	20 x 20	20 x 20
Powershuttle lever with aggressiveness setting switch	●	●	●	●	●
Minimum speed (30kph / 40kph) (kph)	0.25 / 0.30	0.25 / 0.30	0.25 / 0.30	0.25 / 0.30	0.25 / 0.30
Gears in the 4-12kph working range	6	6	6	6	6
Dual Command™ transmission (40kph)	O	O	O	O	O
Number of gears (F x R)	24 x 24	24 x 24	24 x 24	24 x 24	24 x 24
Powershuttle lever with aggressiveness setting switch	●	●	●	●	●
Minimum speed (40kph) (kph)	1.31	1.31	1.31	1.31	1.31
Power clutch	●	●	●	●	●
Gears in the 4-12kph working range	12	12	12	12	12
Dual Command™ transmission [Optional creeper (40kph)]	O	O	O	O	O
Number of gears (F x R)	40 x 40	40 x 40	40 x 40	40 x 40	40 x 40
Powershuttle lever with aggressiveness setting switch	●	●	●	●	●
Minimum speed (kph)	1.17	1.17	1.17	1.17	1.17
Power clutch	●	●	●	●	●
Gears in the 4-12kph working range	12	12	12	12	12
Electrical					
12 volt alternator (Amps)	120	120	120	120	120
Standard battery capacity (CCA / Ah)	800 / 100	800 / 100	961 / 132	962 / 132	962 / 132
Axles					
2WD front axle	O	O	O	O	O
4WD front axle	●	●	●	●	●
SuperSteer™ front axle	O	O	O	O	–
Steering angle 2WD / 4WD / SuperSteer™ (°)	55 / 55 / 76	55 / 55 / 76	55 / 55 / 76	55 / 55 / 76	55 / 55 / –
Turning radius 2WD / 4WD / SuperSteer™ (mm)	3350 / 4235 / 3905	3350 / 4235 / 3905	3350 / 4235 / 3905	3350 / 4235 / 3905	3350 / 4235 / 3905
Dynamic front fenders	O	O	O	O	O
Electro hydraulic 4WD engagement	●	●	●	●	●
Limited slip front diff. lock	●	●	●	●	●
Mechanical diff. lock engagement	●	●	●	●	●
Electro hydraulic diff. lock engagement	O	O	O	O	O
Hydraulics					
Standard main pump flow / pressure @ 2300rpm (Lpm / Bar)	48 / 190	48 / 190	48 / 190	48 / 190	48 / 190
MegaFlow™ option main pump flow / pressure @ 2300rpm (Lpm / Bar)	64 / 190	64 / 190	64 / 190	64 / 190	64 / 190
Standard services pump flow / pressure @ 2300rpm (Lpm / Bar)	28 / 170	28 / 170	28 / 170	28 / 170	28 / 170
MegaFlow™ option services pump flow / pressure @ 2300rpm (Lpm / Bar)	36 / 170	36 / 170	36 / 170	36 / 170	36 / 170
Lift-O-Matic™ Plus system (MDC)**	●	●	●	●	●
Electronic Draft Control (EDC)***	O	O	O	O	O
Remote valves					
Type	Deluxe	Deluxe	Deluxe	Deluxe	Deluxe
Max. no. rear valves / diverter / outlets	3 / 1 / 8	3 / 1 / 8	3 / 1 / 8	3 / 1 / 8	3 / 1 / 8
Max. no. mid mount valves / outlets	2 / 4	2 / 4	2 / 4	2 / 4	2 / 4
Mid mount joystick control	O	O	O	O	O
Linkage					
Rear linkage category	2	2	2	2	2
Max. lift capacity at ball ends (kg)	3884	3884	3884	3884	3884
Max. lift capacity through the range (610 mm behind ball ends) (kg)	2804	2804	2804	2804	2804
Front linkage lift capacity at ball ends (through the range) (kg)	1670	1670	1670	1670	1670

MODELS

	T4.75	T4.85	T4.95	T4.105	T4.115
Front Loader Ready	○	○	○	○	○
Integrated loader joystick	○	○	○	○	○
PTO					
Mechanical PTO engagement****	●	●	●	●	●
Servo Assisted PTO engagement*****	○	○	○	○	○
Electro hydraulic PTO engagement*****	○	○	○	○	○
Soft Start PTO activation*****	●	●	●	●	●
Engine speed at: 540	1957	1957	1957	1957	–
540 / 540E	1957 / 1535	1957 / 1535	1957 / 1535	1957 / 1535	1957 / 1535
540 / 1000	1957 / 2125	1957 / 2125	1957 / 2125	1957 / 2125	1957 / 2125
540E / 1000	1535 / 2125	1535 / 2125	1535 / 2125	1535 / 2125	1535 / 2125
Ground speed	○	○	○	○	○
Front PTO (1000rpm)	○	○	○	○	○
Brakes					
Mechanical Park Lock	○	○	○	○	○
Hydraulic trailer brakes	●	●	●	●	●
Optional pneumatic tractor brakes	○	○	○	○	○
Cab					
Deluxe VisionView™ cab with FOPS - OECD Code 10 Level 1	●	●	●	●	●
Deluxe VisionView™ cab category level - EN 15695	2	2	2	2	2
High visibility roof hatch	●	●	●	●	●
Rear window wiper / washer	○	○	○	○	○
Standard mechanical suspension seat with seat belt	●	●	●	●	●
Standard air suspension seat with seat belt	○	○	○	○	○
Deluxe air suspension 15° swivel seat with seat belt	○	○	○	○	○
Instructor seat with seat belt	○	○	○	○	○
Tilting steering column	●	●	●	●	●
Air conditioning	○	○	○	○	○
Air recirculation filters	●	●	●	●	●
MP3 Radio (with aux input socket)	●	●	●	●	●
Telescopic shatterproof mirrors	○	○	○	○	○
Fender mounted external PTO & Linkage controls***	○	○	○	○	○
Performance monitor with enhanced key pad and ISO 11786 connector	○	○	○	○	○
Cab monitor mounting bracket	○	○	○	○	○
Optimum Deluxe VisionView™ cab noise level - 77/311EEC [dB(A)]	76				
Factory fit rotating beacons (1 / 2)	○	○	○	○	○
Weights					
Minimum unballasted / shipping weights:					
2WD / 4WD front axle with cab (kg)	3290 / 3600	3290 / 3600	3290 / 3600	3290 / 3600	3290 / 3600
2WD max. permissible weight at 30kph (kg)	5300	5300	5300	5300	5300
4WD max. permissible weight at 40kph (kg)	6000	6000	6000	6000	6000

● Standard ○ Optional – Not available * Developed by FPT Industrial ** Conditions Apply *** Dual Command™ cab models only
 **** Synchro Shuttle™ ROPS models ***** Synchro Shuttle™ Cab models ***** Hydraulic Powershuttle and Dual Command™ models



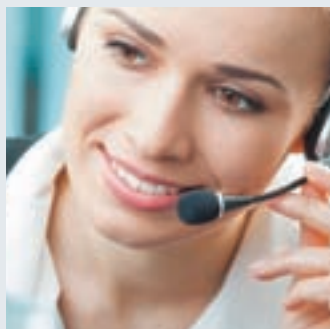
DIMENSIONS

With rear tyres*****		420/85R30	420/85R34	540/65R34
A Overall length inc. front support to rear linkage (mm)		4036	4036	4036
B Min. width (mm)		1953	1955	2165
C Height at centre of rear axle to top of ROPS (mm)		1931	1931	1931
Height at centre of rear axle to top of ROPS folded (mm)		1280	1280	1280
Height at centre of rear axle to top of cab (mm)		1819	1819	1819
D Min. overall height to cab roof (mm)		2519	2569	2569
E Wheelbase (2WD front axle / 4WD front axle) (mm)		2293 / 2235	2293 / 2235	2293 / 2235
F Track width (min. / max.) (mm)		1533 / 1933	1535 / 1935	1625 / 1935
G Ground clearance (mm)		400	450	450

***** Rear Tyres other than those mentioned are available: 320/85R32, 420/70R30, 420/85R30, 480/70R30, 460/85R30, 420/85R34, 480/70R34.

NEW HOLLAND TOP SERVICE:

CUSTOMER SUPPORT AND CUSTOMER INFORMATION



TOP AVAILABILITY

If you need information, or have an out of hours question, ring our toll-free number*. All day, every day, we are just a call away.



TOP SPEED

Express parts delivery: when you need it, where you need it!



TOP PRIORITY

Fast-track solution during the season: because your harvest can't wait!



TOP SATISFACTION

We drive and track the solution you need, keeping you informed: until you are 100% satisfied!



For more details, ask your New Holland dealer!

* Calls to the Top Service team are free from landlines in the United Kingdom and Republic of Ireland. UK-based mobile calls are also free, but Republic of Ireland mobile users should call **01 2421881** and this will be charged at your standard network rate.

AT YOUR OWN DEALER



www.newholland.com/uk - www.newholland.com/ie

The data indicated in this folder are approximate. The models described here can be subjected to modifications without any notice by the manufacturer. The drawings and photos may refer to equipment that is either optional or intended for other countries. Please apply to our Sales Network for any further information. Published by New Holland Brand Communications. Bts Adv. - Printed in Italy - 09/14 - TP01 - (Turin) - **140006/INB**

New Holland with

